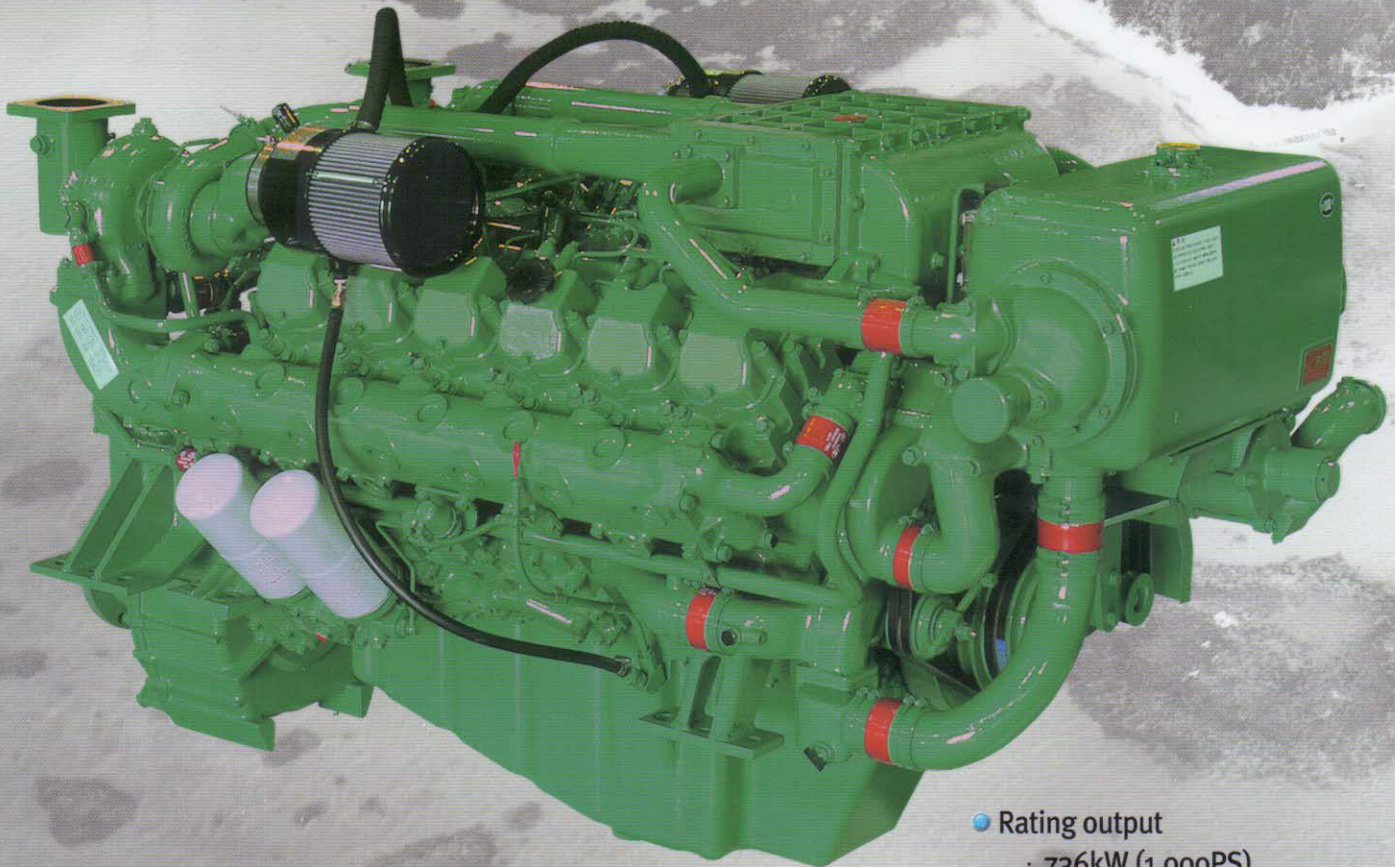


Marine Diesel Engine

V222TI

- Compact Design
- Excellent Performance
- Low Fuel Consumption
- Easy Maintenance



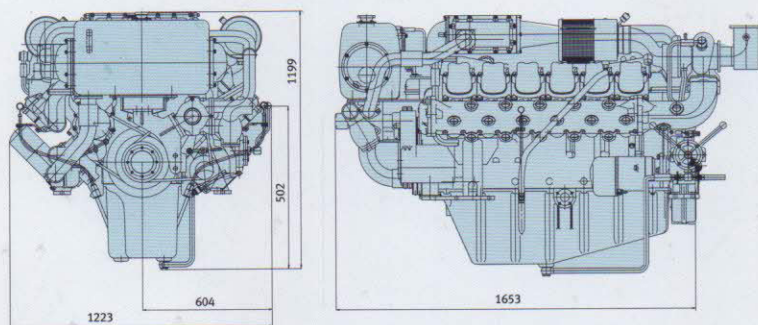
- Rating output
· 736kW (1,000PS)
- Displacement
· 21,927cc
- Dimension (L×W×H)
· 1,653×1,223×1,199mm
· Without Reduction Gear

Main Specification

Model	Units	V222TI (D2842LB)		
		V222TIH	V222TIM	V222TIL
Engine type		4cycle, V type, direct-injection, water cooled with wet turbo charger & inter-cooler		
Rating output	PS(kW) / rpm	720(530)/1,800	800(588)/2,100	1,000(736)/2,300
Displacement	cc	21,927		
Cylinder number - bore × stroke	mm	12 - 128 × 142		
Low idling rpm	rpm	725 ± 25		
No load max. rpm	rpm	below 2,070	below 2,415	below 2,645
Compression ratio		15 : 1		14.6 : 1
Firing order		1 - 12 - 5 - 8 - 3 - 10 - 6 - 7 - 2 - 11 - 4 - 9		
Governor type of injection pump		Mechanical variable speed (R.Q.V)		
Fuel consumption(only Ref.)	g / PS.h	148	154	159
	Lit / h	129	148	191
Starting system		Electric Starting by starter motor		
Starter motor capacity	V - kW	24 - 6.6		
Alternator capacity	V - A	24 - 50		
Battery	V - Ah	24 - 200		
Cooling system		Indirect sea water cooling with heat exchanger		
Cooling water capacity	Max. / Min.	lit 98 / 87		
Fresh water pump type		Centrifugal type, driven by belt		
Sea water pump type		Bronze impeller type driven by belt		
Lubricating oil(Engine)	Pan capacity	lit Max : 40, Min : 33 (Engine total : 43)		
Direction of revolution	Crankshaft	Counter clockwise viewed from stern side		
Engine Size(L×W×H)	Without M/G	mm 1,653×1,223×1,199		
Engine dry weight	Without M/G	kg 1,750	1,750	1,830

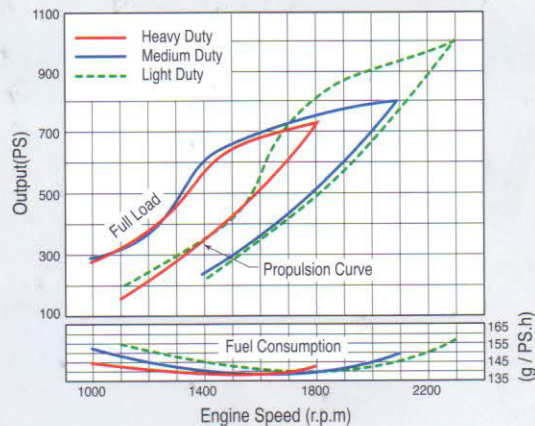
※ H : Heavy Duty, M : Medium Duty, L : Light Duty

Engine Dimension



Performance Curve

- Heavy duty : 530kW(720PS)@1,800rpm
- Medium duty : 588kW(800PS)@2,100rpm
- Light duty : 736kW(1,000PS)@2,300rpm



Marine rating to ISO 3046

(1) Heavy Duty

Operation hours are unlimited per year, at average load is up to 90 %, at full load is up to 80 %
Typical gearbox ratio: 2.5 ~ 6
(Fishing trawler, Tug boat, Pushing vessel, Cargo boat, Freighter, Ferry)

(2) Medium Duty

Operation hours are up to 3,000 per year, at average load is up to 70 %
At full load is (up to 30 % / 4hrs per 12 hour operation period)
Typical gearbox ratio: 2 ~ 3.5
(Fishing boat, Pilot boat, Escort boat, Passenger boat, Ferry, Cruising vessel)

(3) Light Duty

Operation hours are up to 1,000 per year, at average load is up to 50 %
At full load is (up to 20 % / 2hrs per 12 hour operation period)
Typical gearbox ratio: 1 ~ 2.5
(Light weight fishing boat, Yacht, Coastguard boat, Fast boat, Fire pump, Navy)

(Dec.2006)



**Doosan Infracore
Engines & Materials**

Seoul Office : Overseas Marketing & Sales
Engines & Materials BG
Doosan Infracore Co., Ltd.
23rd Floor, Doosan Tower, 18-12, Euljiro 6-ga,
Jung-gu, Seoul, Korea.
Tel : +82-2-3398-8530~8546
Fax : +82-2-3398-8509

Web site : <http://engine.doosaninfracore.co.kr>

AUTHORIZED DEALER

* Specifications are subject to change without prior notice.