

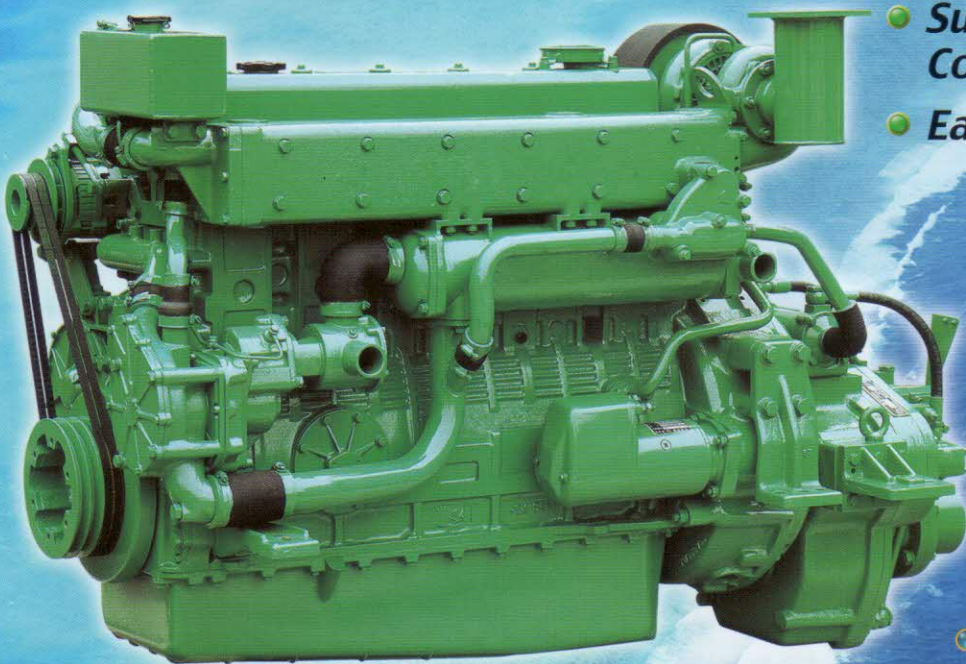
DOOSAN **DAEWOO**

Marine Diesel Engine

MD196T

Daewoo Heavy Industries has made
a fresh start as **Doosan Infracore**

- Compact Design
- Excellent Performance
- Super Low Fuel Consumption
- Easy Maintenance



- Rating output (B.H.P)
· 206kW (280PS)
- Displacement
· 11,051cc
- Dimension (L×W×H)
· 1,662×854×1,129mm
· Including Reduction Gear

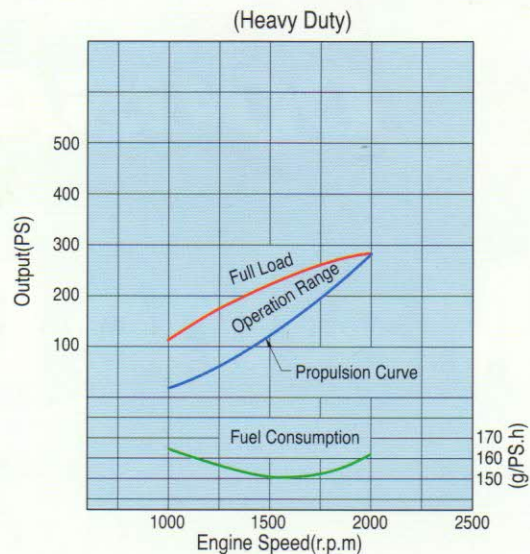
DOOSAN

Infracore

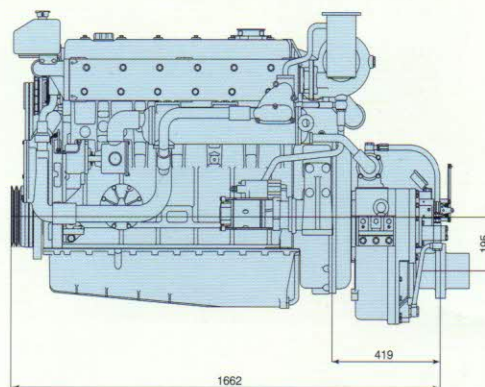
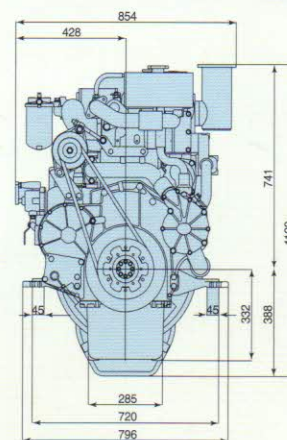
Main Specification

Model		Units	MD196T
Engine type			4 cycle, In line, direct- injection, water cooled with wet turbo charger
Rating output (B.H.P)		kW(PS) / rpm	206(280)/2,000
Displacement		cc	11,051
Cylinder number - bore (φ) × stroke		mm	6 - φ 123 × 155
Valve clearance at cold	In / Ex	mm	0.3 / 0.3
Low idling rpm		rpm	725 ± 25
No load max. rpm		rpm	below 2,200
Mean effective pressure		kg / cm ²	11.41
Mean piston speed		m/sec.	10.33
Compression ratio			17.1 : 1
Firing order			1 - 5 - 3 - 6 - 2 - 4
Max. firing pressure of cylinder		kg / cm ²	106
Compression pressure	at 200 rpm	kg / cm ²	28 (Initial condition)
Governor type of injection pump			Mechanical variable speed (R.Q.V)
Fuel consumption		g / PS.h	156
		Lit/h	49
Injection timing (B.T.D.C)		deg	14° ± 1°
Fuel inj. nozzle opening pressure		kg / cm ²	1st : 160, 2nd : 220
Starting system			Electric Starting by starter motor
Starter motor capacity		V - kW	24 - 6.0
Alternator capacity		V - A	24 - 50
Battery		V - Ah	24 - 150
Cooling system			Indirect sea water cooling with heat exchanger
Cooling water capacity	Max. / Min.	lit	24 / 19
Fresh water pump type			Centrifugal type, driven by gear
Sea water pump type			Rubber impeller type driven by gear
Lubricating oil (Engine)	Pan capacity	lit	Max : 25, Min : 19 (Engine total : 27)
	Pressure	kg / cm ²	Full : 3.5, Idle : 1.2
Marine gear	Gear ratio		1.97 2.57 3.03 3.46
Direction of revolution	Crankshaft		Counter clockwise viewed from stern side
	Propeller		Clockwise viewed from stern side
Engine Size (L×W×H)	Without M/G	mm	1,243×854×1,073
	With M.gear	mm	1,662×854×1,129
Engine dry weight	Without M/G	kg	975
	With M.gear	kg	1,225

Installation Dimension



Performance Curve



MD196T(April/06)



Infracore

Head office : 7-11, Hwasu-Dong, Dong-Gu, Incheon, Korea

Tel : +82-32-760-1951, 1953

Fax : +82-32-761-2759

Seoul Office : Doosan Infracore Co. Ltd., 23rd Floor, DoosanTower,

18-12, Euljiro 6-ga, Jung-gu, Seoul, Korea.

Tel : +82-2-3398-8521~8536

Fax : +82-2-3398-8509

Web site : www.doosaninfracore.com

AUTHORIZED DEALER

* Specifications are subject to change without prior notice.